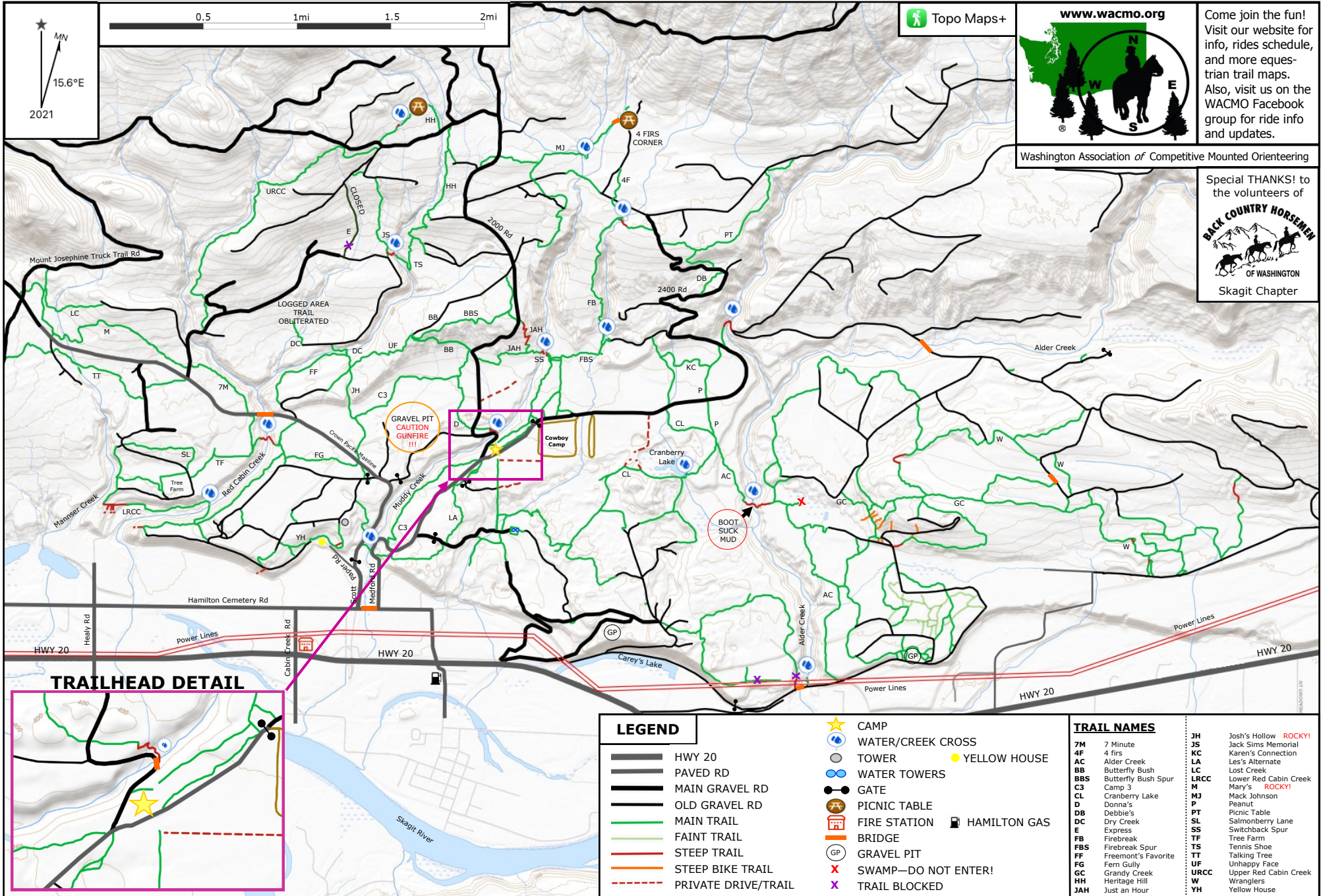


# Les Hilde Trail System

6998 Medford Rd, Sedro-Woolley, WA 98284



**DRIVING DIRECTIONS: Eastbound or Westbound HWY 20** Turn **NORTH** onto **CABIN CREEK RD.** (FIRE STATION ON CORNER) Turn **RIGHT** onto **HAMILTON CEMETERY RD.** Turn **LEFT** onto **MEDFORD RD.** Go about 1.0 miles to **Les Hilde** trailhead, day use, and camping area. **DNR Discover Pass REQUIRED FOR PARKING.**



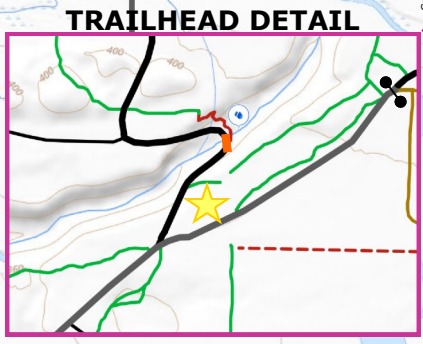
**www.wacmo.org**

Come join the fun! Visit our website for info, rides schedule, and more equestrian trail maps. Also, visit us on the WACMO Facebook group for ride info and updates.

Washington Association of Competitive Mounted Orienteering

Special THANKS! to the volunteers of

OF WASHINGTON  
Skagit Chapter



### LEGEND

- HWY 20
- PAVED RD
- MAIN GRAVEL RD
- OLD GRAVEL RD
- MAIN TRAIL
- FAINT TRAIL
- STEEP TRAIL
- STEEP BIKE TRAIL
- PRIVATE DRIVE/TRAIL
- CAMP
- WATER/CREEK CROSS
- TOWER
- WATER TOWERS
- GATE
- PICNIC TABLE
- FIRE STATION
- BRIDGE
- GRAVEL PIT
- SWAMP—DO NOT ENTER!
- TRAIL BLOCKED
- YELLOW HOUSE
- HAMILTON GAS

### TRAIL NAMES

<b>7M</b>	7 Minute	<b>JH</b>	Josh's Hollow <b>ROCKY!</b>
<b>4F</b>	4 Firs	<b>JS</b>	Jack Sims Memorial
<b>AC</b>	Alder Creek	<b>KC</b>	Karen's Connection
<b>BB</b>	Butterfly Bush	<b>LA</b>	Les's Alternate
<b>BBS</b>	Butterfly Bush Spur	<b>LC</b>	Lost Creek
<b>C3</b>	Camp 3	<b>LRCC</b>	Lower Red Cabin Creek
<b>CL</b>	Cranberry Lake	<b>M</b>	Mary's <b>ROCKY!</b>
<b>D</b>	Donna's	<b>MJ</b>	Mack Johnson
<b>DB</b>	Debbie's	<b>P</b>	Peanut
<b>DC</b>	Dry Creek	<b>PT</b>	Picnic Table
<b>E</b>	Express	<b>SL</b>	Salmonberry Lane
<b>FB</b>	Firebreak	<b>SS</b>	Switchback Spur
<b>FBS</b>	Firebreak Spur	<b>TF</b>	Tree Farm
<b>FF</b>	Freemont's Favorite	<b>TS</b>	Tennis Shoe
<b>FG</b>	Fern Gully	<b>TT</b>	Talking Tree
<b>GC</b>	Grandy Creek	<b>UF</b>	Unhappy Face
<b>HH</b>	Heritage Hill	<b>URCC</b>	Upper Red Cabin Creek
<b>JAH</b>	Just an Hour	<b>W</b>	Wranglers
		<b>YH</b>	Yellow House

Map originally created by: Sue Lessley  
Updated by: Heidi Schwiger & Sandra Kingshott

\*User assumes all risk associated with this map. As with all maps and related data, inaccuracies may exist and conditions may and do change.  
May 2021