

Ahtanum State Forest Near Tampico, WA

Map Created By: D. Amos, Revised 2023



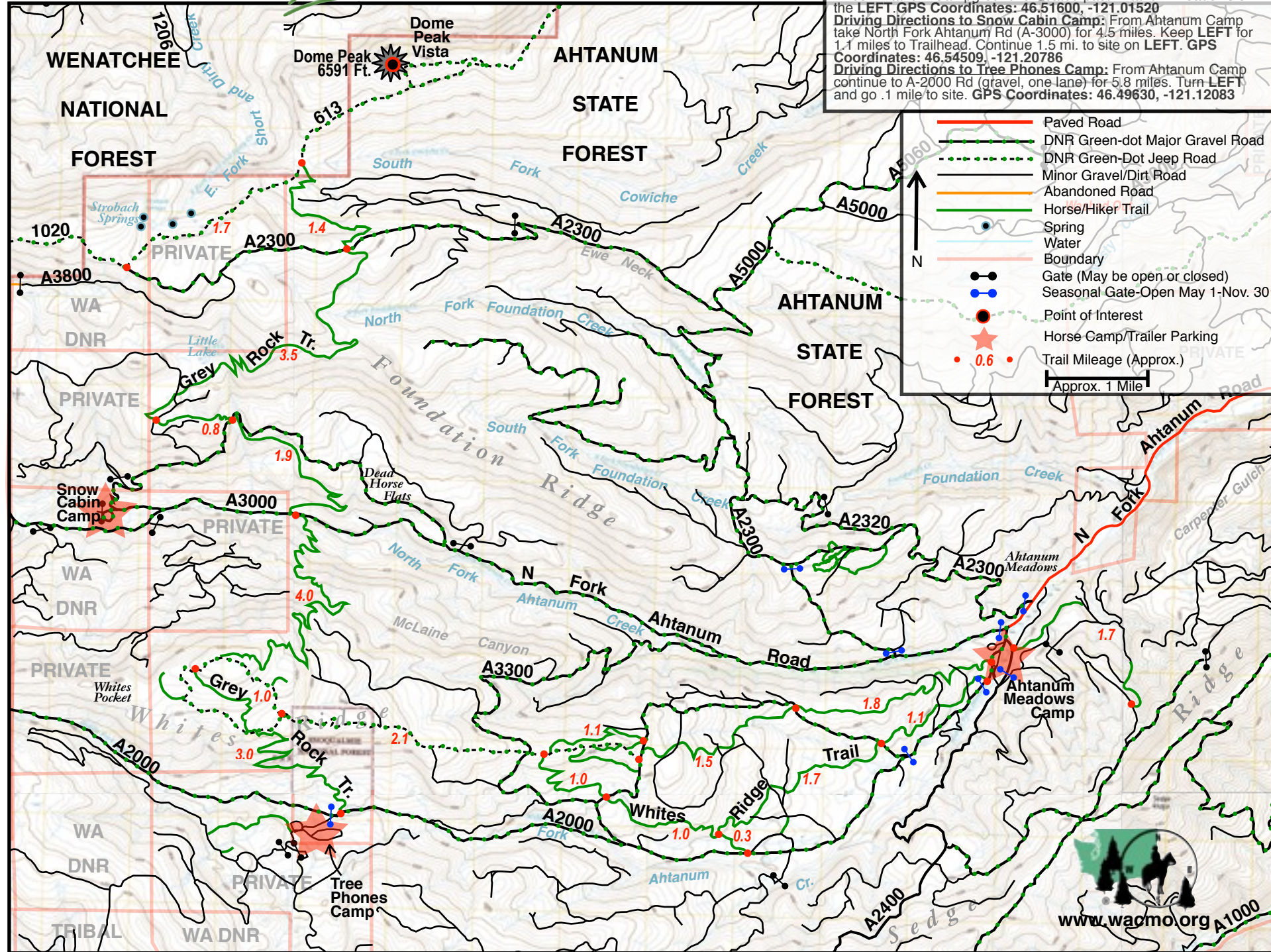
DNR Discover Pass Required.

User assumes all risk associated with this map. As with all maps and related data, inaccuracies may exist and conditions may and do change.

Driving Directions to Ahtanum Camp: Start in Yakima. Go SOUTH on I-82 for 2 miles to Union Gap. Go WEST on Ahtanum Road to Tampico. Go WEST on A-2000 (Middle Fork Rd) for 9.5 miles. Ahtanum Campground is located past Ahtanum Meadows on the LEFT. **GPS Coordinates: 46.51600, -121.01520**

Driving Directions to Snow Cabin Camp: From Ahtanum Camp take North Fork Ahtanum Rd (A-3000) for 4.5 miles. Keep LEFT for 1.1 miles to Trailhead. Continue 1.5 mi. to site on LEFT. **GPS Coordinates: 46.54509, -121.20786**

Driving Directions to Tree Phones Camp: From Ahtanum Camp continue to A-2000 Rd (gravel, one lane) for 5.8 miles. Turn LEFT and go .1 mile to site. **GPS Coordinates: 46.49630, -121.12083**



	Paved Road
	DNR Green-dot Major Gravel Road
	DNR Green-Dot Jeep Road
	Minor Gravel/Dirt Road
	Abandoned Road
	Horse/Hiker Trail
	Spring
	Water
	Boundary
	Gate (May be open or closed)
	Seasonal Gate-Open May 1-Nov. 30
	Point of Interest
	Horse Camp/Trailer Parking
	Trail Mileage (Approx.)
	Approx. 1 Mile

