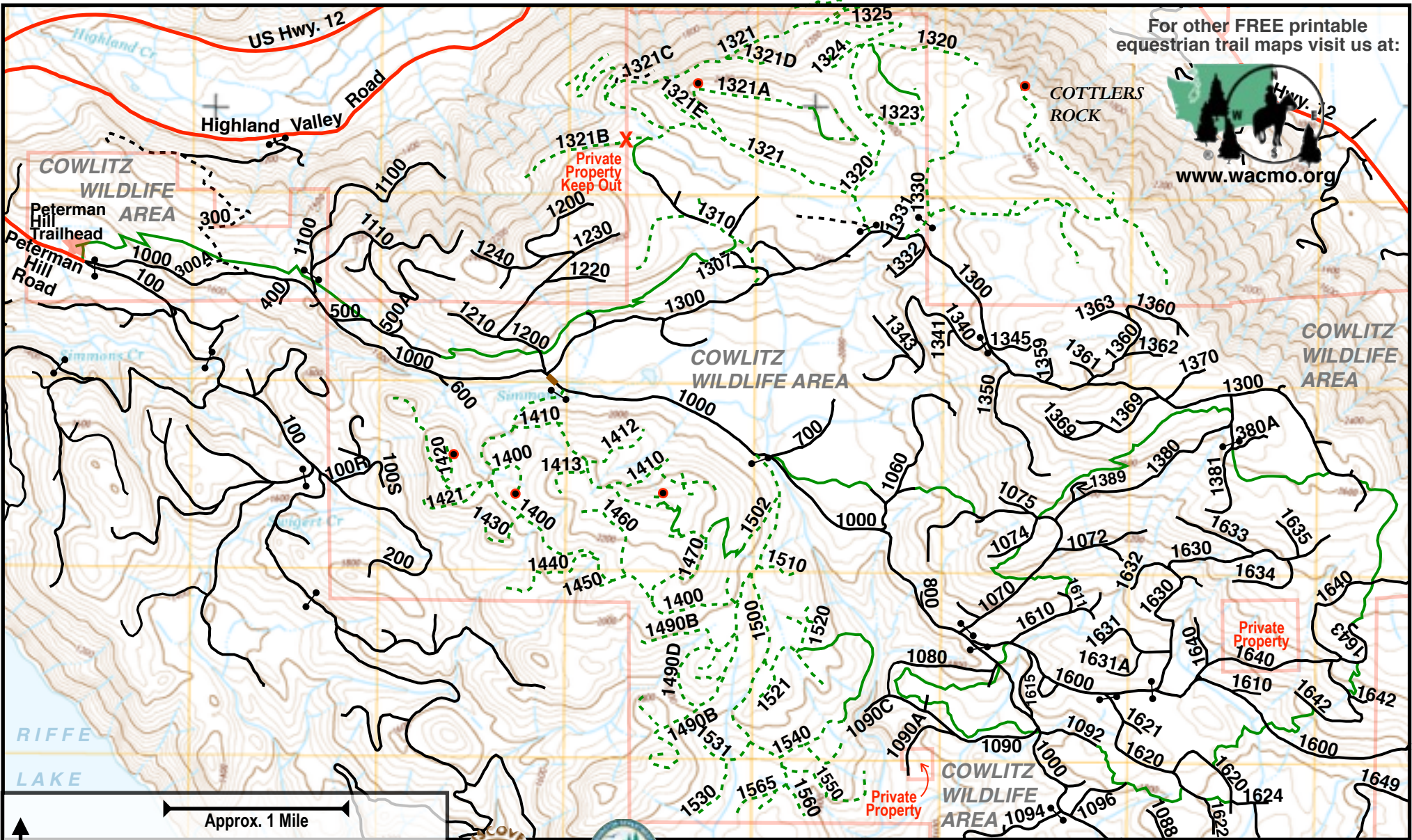


For other FREE printable equestrian trail maps visit us at:



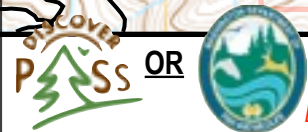
www.wacmo.org



Approx. 1 Mile

N

- Paved Road
- Gravel/Dirt Road Open to Vehicles
- Abandoned or Closed Road not Open to Traffic and/or Used as Trails
- Trail
- Boundary
- Gate May be Open or Closed
- View Point
- Bridge
- Trailhead Parking



Peterman Hill Trails, Morton, Wash.

Created by D. Amos, Revised 2023

Day Use Only **NO** Overnight Camping. Discover Pass or Fish & Wildlife Pass Required.

User assumes all risk associated with this map. As with all maps and related data, inaccuracies may exist and conditions may and do change.

DRIVING DIRECTIONS from I-5 North or South:

Take Exit 68 (White Pass/Yakima) and go EAST on US Hwy. 12 towards Morton for approx. 27.4 miles. Right before mile marker 94 turn SOUTH (RIGHT) onto Highland Valley Rd. In 1/10th of a mile Highland Valley Rd. turns left, stay RIGHT and follow Peterman Hill Road up the hill to the trailhead and parking, approx. 8/10th of a mile.

Alternate Route from Morton, WA: From Morton turn WEST (right) onto US Hwy. 12 for approx. 5.8 miles, right after mile marker 94, turn SOUTH (LEFT) onto Highland Valley Rd. In 1/10th of a mile Highland Valley Rd. turns left, stay RIGHT and follow Peterman Hill Road up the hill to the trailhead and parking, approx. 8/10th of a mile.