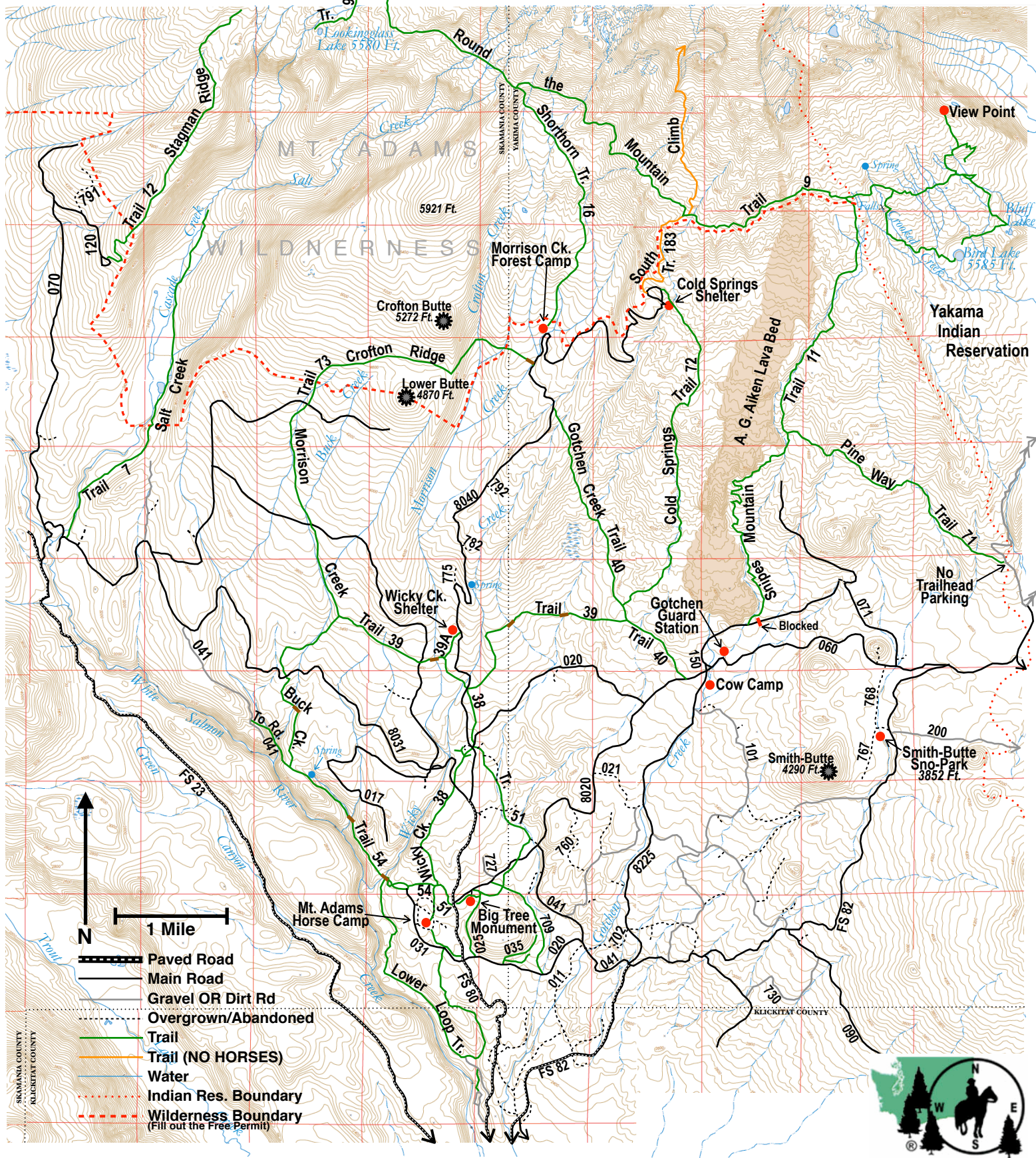


Mount Adams Horse Camp, Trout Lake, Wash.

Created by D. Amos & M. Gazaway

Revised 10/2015

NO NW FOREST PASS REQUIRED, \$5.00/OVERNIGHT FEE. Certified Weed Free Hay Required.
User assumes all risk associated with this map. As with all maps and related data, inaccuracies may exist and conditions may and do change.



From White Salmon, WA take Hwy 141 toward Trout Lake then right on Mt. Adams recreation road and then LEFT on the 8000 (80) road at the corner. It comes up quick so watch for it. Turn LEFT on the 031 road into Mt. Adams Horse Camp.

From Randle, WA take the 23 road and left on Mt. Adams Recreation Rd. and then LEFT on the 8000 (80) road at the corner. It comes up quick so watch for it. Turn LEFT on the 031 road into Mt. Adams Horse Camp.

GPS Coordinates: 46.05429N, 121.538563W

www.wacmo.org