

Kalama Horse Camp, Cougar, Washington

Map created by: D. Amos

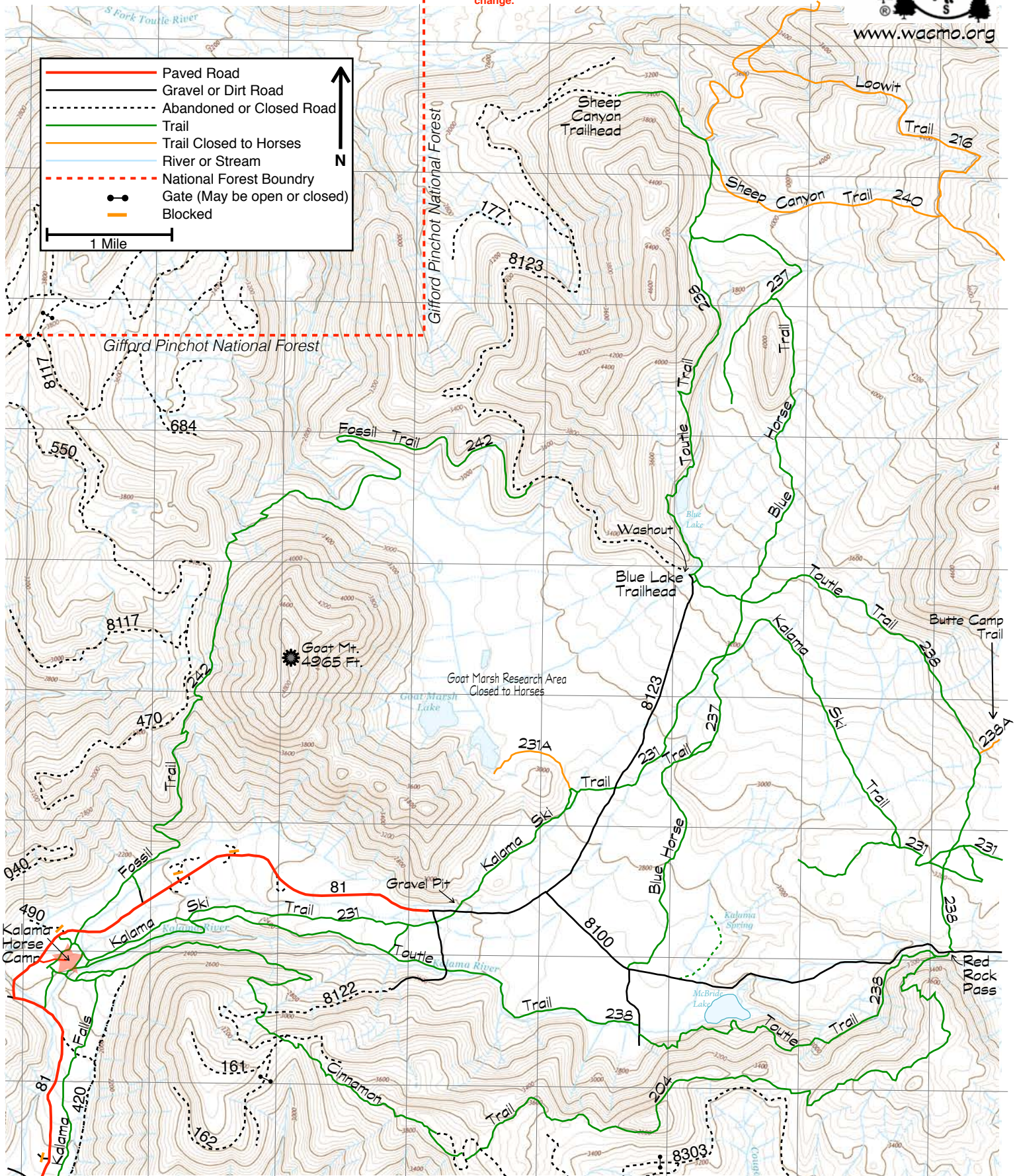
Revised 06/2014

NO NW FOREST PASS REQUIRED, OVERNIGHT FEE AT KALAMA HORSE CAMP. CERTIFIED WEED FREE HAY REQUIRED.

User assumes all risk associated with this map. As with all maps and related data, inaccuracies may exist and conditions may and do change.



www.wacmo.org



Driving Directions: Interstate 5 to WA exit #21 at Woodland, WA. Head EAST at Pacific Avenue and stay EAST on Lewis River Road for 27.5 miles. LEFT at Forest Service Road 81 (paved) and follow for 8.7 miles to Kalama Horse Camp on the RIGHT.

GPS Coordinates: 46.142623N, 122.327061W